

ODA680-33V-MH

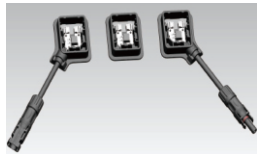
Topcon Technology

DIMENSIONS

2384*1303*30mm

CELL SIZE

210*105mm

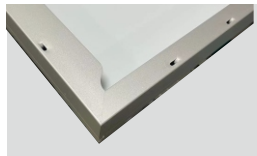


JUNCTION BOX

Waterproof protection grade: IP67/IP68
Safety Level: Class II
Maximum System Voltage: 1500V
outstanding waterproof level ·
Effectively resist harsh environments



18BB



Frame

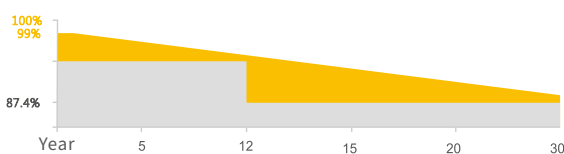
Strong machinical load
resistance up to 5400Pa
Anodic oxidation layer resistant to
chemical corrosion available
in silver and black

QUALIFICATIONS AND CERTIFICATES



· IEC61215 / · IEC61730

WARRANTY



12 YEARS

Guarantee on product material and workmanship

30 YEARS

Linear Power output warranty



SMBB Technology

Better light trapping and current collection to improve module power output and reliability.



Enhanced Mechanical Load

Certified to withstand: wind load (2400 Pascal) and snow load (5400 Pascal).

NINGBO OSDA SOLAR CO.,LTD
www.osdasol.com

OSDA Solar established in 2008, is a high-tech enterprise integrating R&D, production and sales of solar energy products. It is committed to the overall solution of distributed photovoltaic system and provides services from consulting, design, construction, financing to intelligent operation and maintenance.

OSDA has 3 production sites in China and branches and representative offices in more than 10 countries overseas. Products include solar cells, modules, On/Off grid solar system, solar pump and other solar related applications. Our products have passed many international certifications such as TÜV, MCS, CEC, IEC, ISO, CE, CQC and so on. With excellent quality, our products are exported to more than 100 countries of the world.

Since its establishment, OSDA has always followed the idea of "Smart energy · Lightening future". It has followed the steps of "the Belt and Road Initiative", we bring bright light to the countries and people who are short of electricity. Sharing the concept of modern civilization, and building a green home together.

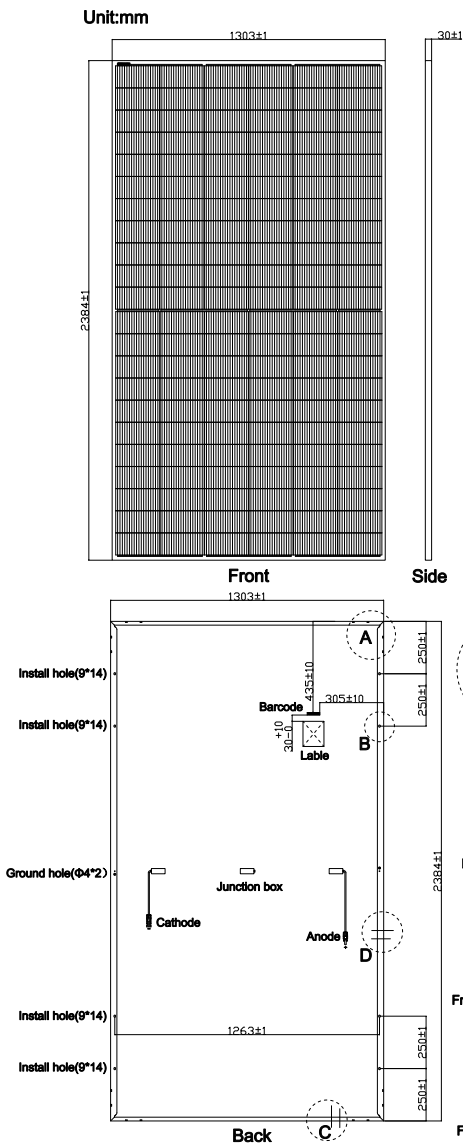
ELECTRICAL DATA (STC)

Model Type	ODA680-33V-MH
Peak Power(Pmax)	680.00
Maximum Power Voltage(Vmp)	39.92
Maximum Power Current(Imp)	17.04
Open Circuit Voltage(Voc)	47.90±3%
Short Circuit Current(Isc)	17.80±3%
Module Efficiency(%)	21.90

* STC: irradiance 1000 W/m², AM 1.5, and cell temperature of 25°C

* Tolerance: Voc±3%; Isc±3%

PV DRAWINGS



TEMPERATURE & MAXIMUM RATING

Maximum System Voltage (V)	1500 V
Maximum Series Fuse Rating (A)	30 A
Power Tolerance	±3%
Pmax Temperature Coefficients (W/°C)	-0.240 %/°C
Voc Temperature Coefficients (V/°C)	-0.220 %/°C
Isc Temperature Coefficients (A/°C)	+0.047 %/°C
NOCT Nominal Operating Cell Temperature (°C)	45±2 °C
Operating and Storage Temperature (°C)	-40~+85 °C

MECHANICAL CHARACTERISTICS

Cell Type	210*105 N Type Mono
No. of Cells	132 (12*11)
Dimensions	2384*1303*30mm
Weight	33.90kg
Front Glass	3.2mm high transmission, low iron, tempered glass
Frame	Anodized Aluminium Alloy
Junction box	IP67/IP68 3diodes
Output cables	4mm ² cable 35cm (Including Hengda PV-ST101 connector)
MaxWind Load/Snow Load	2400Pa/5400Pa
Fire safety class	Class C

PACKING WAY

40HQ container | 18 Packages/666pcs

IV CURVE

